

Sample Splitter



AG-104

For driving dry material such as gravel and sand

Type	Parts Name	Specification
AG-100	Sample Splitter	Stainless steel, chute width 1/2" 12 holes supplied complete with scoop and pans.
AG-101	Sample Splitter	Stainless steel, chute width 3/4" 12 holes supplied complete with scoop and pans.
AG-102	Sample Splitter	Stainless steel, chute width 1" 12 holes supplied complete with scoop and pans.
AG-103	Sample Splitter	Stainless steel, chute width 1 1/2" 8 holes supplied complete with scoop and pans.
AG-104	Sample Splitter	Stainless steel, chute width 2" 8 holes supplied complete with scoop and pans.
AG-105	Sample Splitter	Stainless steel, chute width 2 1/2" 8 holes supplied complete with scoop and pans.
AG-106	Sample Splitter	Stainless steel, chute width 3" 8 holes supplied complete with scoop and pans.

Dimension (l x w x h) : 65 x 40 x 40 cm

Gilson Sample Splitter (AG-111)

Painted plate frame, aluminium chute, variable chute width, 1/2" increment (1/2", 1", 1 1/2", 2", etc), supplied with pans.

Dimension (l x w x h) : 65 x 40 x 40 cm
Gross Weight : 15 kg



AG-111



AG-111

Precision Sample Splitter (AG-122)

Stainless steel, chute width 1/4" x 32 holes, supplied complete with scoop and pans.

Dimension (l x w x h) : 50 x 50 x 50 cm
Gross Weight : 10 kg



AG-122

Length Gauge (AG-170)

AG-170

BS-812

For rapid measuring the length of aggregates. Hard wood base, steel base plate, distance : 89.0, 62.86, 39.9, 28.5, 20.1, 14.2 mm
Also required, but not part of this set:

GE-153 Dial O-Gram balance

GE-363 Mixing Bowl

Dimension (l x w x h) : 50 x 12 x 18 cm

Gross Weight : 5 kg



AG-170

Thickness Gauge

AG-180

BS-812

For determining the flakiness index of coarse aggregate. Galvanized metal sheet, hole size 100 x 33.9, 90 x 26.3, 80 x 19.7, 60 x 14.4, 50 x 10.2, 40 x 7.2, 30 x 4.9

Dimension (l x w x h) : 30 x 20 x 5 cm

Gross Weight : 3 kg

Also required, but not part of this set:

GE-153 Dial O-Gram balance

GE-363 Mixing Bowl

We can supply :

Brass Round Sieve

For determining grain size distribution of soil particles or sand/gravel.
 Brass frame 8" dia.

Type	Parts Name	Specification	
AG-200 A	Sieve 4"	Mesh 101.6 mm	opening
AG-201 A	Sieve 3 1/2"	Mesh 88.9 mm	opening
AG-202 A	Sieve 3"	Mesh 76.2 mm	opening
AG-203 A	Sieve 2 1/2"	Mesh 62.5 mm	opening
AG-204 A	Sieve 2"	Mesh 50.8 mm	opening
AG-205 A	Sieve 1 3/4"	Mesh 44.4 mm	opening
AG-206 A	Sieve 1 1/2"	Mesh 38.1 mm	opening
AG-207 A	Sieve 1 1/4"	Mesh 31.7 mm	opening
AG-208 A	Sieve 1"	Mesh 25.4 mm	opening
AG-209 A	Sieve 7/8"	Mesh 22.2 mm	opening
AG-210 A	Sieve 3/4"	Mesh 19.0 mm	opening
AG-211 A	Sieve 5/8"	Mesh 15.8 mm	opening
AG-212 A	Sieve 1/2"	Mesh 12.7 mm	opening
AG-213 A	Sieve 7/16"	Mesh 11.1 mm	opening
AG-214 A	Sieve 3/8"	Mesh 9.5 mm	opening
AG-215 A	Sieve 5/16"	Mesh 7.9 mm	opening
AG-216 A	Sieve 1/4"	Mesh 6.3 mm	opening
AG-218 A	Sieve # 4	Mesh 4.75 mm	opening
AG-222 A	Sieve # 8	Mesh 2.36 mm	opening
AG-223 A	Sieve # 10	Mesh 2.00 mm	opening
AG-224 A	Sieve # 12	Mesh 1.70 mm	opening
AG-226 A	Sieve # 16	Mesh 1.18 mm	opening
AG-228 A	Sieve # 20	Mesh 0.850 mm	opening
AG-230 A	Sieve # 30	Mesh 0.600 mm	opening
AG-232 A	Sieve # 40	Mesh 0.425 mm	opening
AG-234 A	Sieve # 50	Mesh 0.300 mm	opening
AG-235 A	Sieve # 60	Mesh 0.250 mm	opening
AG-236 A	Sieve # 70	Mesh 0.212 mm	opening
AG-237 A	Sieve # 80	Mesh 0.180 mm	opening
AG-238 A	Sieve # 100	Mesh 0.150 mm	opening
AG-239 A	Sieve # 120	Mesh 0.125 mm	opening
AG-240 A	Sieve # 140	Mesh 0.106 mm	opening
AG-241 A	Sieve # 170	Mesh 0.090 mm	opening
AG-242 A	Sieve # 200	Mesh 0.075 mm	opening
AG-250	Pan & Cover		

Dimension (l x w x h) : 22 x 22 x 6.5 cm
 Gross Weight : 0.75 kg



AG-208 A / AG-250

Stainless Steel Round Sieve

For determining grain size distribution of soil particles or sand/gravel.
 Brass frame 8" dia.

Type	Parts Name	Specification	
AG-300 A	Sieve 4"	Mesh 101.6 mm	opening
AG-301 A	Sieve 3 1/2"	Mesh 88.9 mm	opening
AG-302 A	Sieve 3"	Mesh 76.2 mm	opening
AG-303 A	Sieve 2 1/2"	Mesh 62.5 mm	opening
AG-304 A	Sieve 2"	Mesh 50.8 mm	opening
AG-305 A	Sieve 1 3/4"	Mesh 44.4 mm	opening
AG-306 A	Sieve 1 1/2"	Mesh 38.1 mm	opening
AG-307 A	Sieve 1 1/4"	Mesh 31.7 mm	opening
AG-308 A	Sieve 1"	Mesh 25.4 mm	opening
AG-309 A	Sieve 7/8"	Mesh 22.2 mm	opening
AG-310 A	Sieve 3/4"	Mesh 19.0 mm	opening
AG-311 A	Sieve 5/8"	Mesh 15.8 mm	opening
AG-312 A	Sieve 1/2"	Mesh 12.7 mm	opening
AG-313 A	Sieve 7/16"	Mesh 11.1 mm	opening
AG-314 A	Sieve 3/8"	Mesh 9.5 mm	opening
AG-315 A	Sieve 5/16"	Mesh 7.9 mm	opening
AG-316 A	Sieve 1/4"	Mesh 6.3 mm	opening
AG-318 A	Sieve # 4	Mesh 4.75 mm	opening
AG-322 A	Sieve # 8	Mesh 2.36 mm	opening
AG-323 A	Sieve # 10	Mesh 2.00 mm	opening
AG-324 A	Sieve # 12	Mesh 1.70 mm	opening
AG-326 A	Sieve # 16	Mesh 1.18 mm	opening
AG-328 A	Sieve # 20	Mesh 0.850 mm	opening
AG-330 A	Sieve # 30	Mesh 0.600 mm	opening
AG-332 A	Sieve # 40	Mesh 0.425 mm	opening
AG-334 A	Sieve # 50	Mesh 0.300 mm	opening
AG-335 A	Sieve # 60	Mesh 0.250 mm	opening
AG-336 A	Sieve # 70	Mesh 0.212 mm	opening
AG-337 A	Sieve # 80	Mesh 0.180 mm	opening
AG-338 A	Sieve # 100	Mesh 0.150 mm	opening
AG-339 A	Sieve # 120	Mesh 0.125 mm	opening
AG-342 A	Sieve # 200	Mesh 0.075 mm	opening
AG-350	Pan & Cover		

Dimension (l x w x h) : 22 x 22 x 6.5 cm
 Gross Weight : 0.75 kg



AG-308 A / AG 350

We can supply :



AG-404 A / AG 492

Wooden Sieve

For determining grain size distribution of soil particles or sand/gravel.
 Wooden frame : 60 x 40 x 7 cm

Type	Parts Name	Specification	
AG-400	Wooden Sieve 4"	Mesh 101.6 mm	opening
AG-401	Wooden Sieve 3 1/2"	Mesh 88.9 mm	opening
AG-402	Wooden Sieve 3"	Mesh 76.2 mm	opening
AG-403	Wooden Sieve 2 1/2"	Mesh 62.5 mm	opening
AG-404	Wooden Sieve 2"	Mesh 50.8 mm	opening
AG-405	Wooden Sieve 1 3/4"	Mesh 44.4 mm	opening
AG-406	Wooden Sieve 1 1/2"	Mesh 38.1 mm	opening
AG-407	Wooden Sieve 1 1/4"	Mesh 31.7 mm	opening
AG-408	Wooden Sieve 1"	Mesh 25.4 mm	opening
AG-409	Wooden Sieve 7/8"	Mesh 22.2 mm	opening
AG-410	Wooden Sieve 3/4"	Mesh 19.0 mm	opening
AG-411	Wooden Sieve 5/8"	Mesh 15.8 mm	opening
AG-412	Wooden Sieve 1/2"	Mesh 12.7 mm	opening
AG-413	Wooden Sieve 7/16"	Mesh 11.1 mm	opening
AG-414	Wooden Sieve 3/8"	Mesh 9.5 mm	opening
AG-415	Wooden Sieve 5/16"	Mesh 7.9 mm	opening
AG-416	Wooden Sieve 1/4"	Mesh 6.3 mm	opening
AG-418	Wooden Sieve # 4 Mesh	4 Mesh 4.75 mm	opening
Dimension (l x w x h) : 130 x 65 x 70 cm			
Gross Weight : 6 kg			

Wet Washing Sieve

For wet sieving of soil, cement and fine aggregates.

AG-492	Wet Washing Sieve	#200, 8" dia., 4" depth
AG-493	Wet Washing Sieve	#200, 8" dia., 4" depth
Dimension (l x w x h) : 30 x 30 x 25 cm		
Gross Weight : 1.5 kg		



AG-510

Sieve Shaker (AG-510)

Hand operated, steel box, cast aluminium pulley, 8" sieve dia, 8 sieve capacity, supplied without sieve/pan & cover.

Dimension (l x w x h) : 50 x 50 x 100 cm
 Gross Weight : 50 kg



AG-515 / AG-250 / AG-XXX A

Sieve Shaker (AG-515)

Electric, 220 V-AC, 200 watt, steel base, cast aluminium pulley, 8" sieve dia, 8 sieve capacity, supplied without sieve/pan & cover.

Dimension (l x w x h) : 50 x 50 x 100 cm
 Gross Weight : 55 kg



AG-600

Sand Equivalent Test Set (AG-600)

ASTM D-2419

For indicating relative proportion of clay like material and fine dust in granular soil or graded aggregate

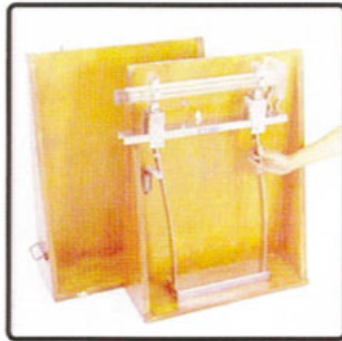
AG-601	Graduated Cylinder	Transparent fibre glass, 1 1/4" i.d, 1 1/2" o.d 17" height, with scale	2 Pc
AG-602	Stopper Assembly	Rubber stopper, irrigation tube, hose, syphon	1 Set
AG-603	Weight Foot	Machine steel, galvanized, 1000 gr weight, sand reading indicator	1 Set
AG-605	Carrying Case	Wooden case with handle	1 Pc
GE-390	Thin Box	Aluminium 60 gr capacity	2 Pc
GE-470	Funnel	Plastic, narrow mouth	1 Pc
Dimension (l x w x h) : 70 x 50 x 20 cm			
Gross Weight : 20 kg			

AASHTO T-176

Also required, but not part of this set:

AG-218 A	Sieve no. 4
AG-250	Pan & Cover
GE-747	Rubber Gloves

We can supply :



AG-610 / AG-601

Sand Equivalent Shaker (AG-610)

AG-610

ASTM D-2419

To give greater uniformity action, hand operated mounting bracket with cylinder holder, two spring steel straps, built in counter, wooden case, Supplied without graduated cylinder.

Dimension (l x w x h) : 60 x 30 x 90 cm
 Gross Weight : 20 kg

AASHTO T-176



AG-621

Bottle Roler (AG-621)

AG-621

Electric, 220 V, 100 watt, 50 Hz, 1 Phase, 80 RPM. Supplied complete with 1 kg capacity glass jar.

Dimension (l x w x h) : 60 x 30 x 90 cm
 Gross Weight : 20 kg



AG-700

Los Angeles Abrasion Machine (AG-700)

ASTM C-131

For measuring degradation of mineral aggregates from abrasion, impact and grinding

AASHTO T-96

Type	Parts Name	Specification	Qty
AG-701	Los Angeles Abrasion Machine Frame	Welded steel frame, 8 and 12 cm [-steel profile	1 Set
	Drum	1/2" thick steel plate 28" inner diameter 20" inner width	
	Automatic Counter	Digital, module system for easy maintenance Panel button : ON-OFF-RUN-STOP JOG- RESET-500-1000	
	Power	Electromotor, dual voltage 110-220V, 750 Watt, 1 Phase Heavy duty speed reducer 30 - 33 RPM.	
AG-702	Drum Speed Steel Ball	Steel 1 7/8" diameter	12 Pc
AG-703	Cathing Pan	Galvanized steel	1 Pc
Dimension (l x w x h) : 50 x 50 x 100 cm			
Gross Weight : 55 kg			

Also required, but not part of this set:

AG-224 A	Sieve No. 12
GE-157	Heavy duty solution Balance
GE-174	Drying oven
GE-363	Mixing Bowl

Aggregate Impact Test (AG-750)

For determining the aggregate impact value and resistance of aggregate to sudden shock of impact.

Type	Parts Name	Specification	Qty
AG-751	Impact Machine	Heavy-duty steel construction, safety locking bar, built in counter	1 Set
AG-752	Cylindrical Measure	Machine steel, 75 mm dia 50 mm deep	1 Pc
AG-753	Tamping Rod	Galvanized steel, 3/8" dia, 8" length	1 Pc

Dimension (l x w x h) : 50 x 30 x 90 cm
 Gross Weight : 80 kg

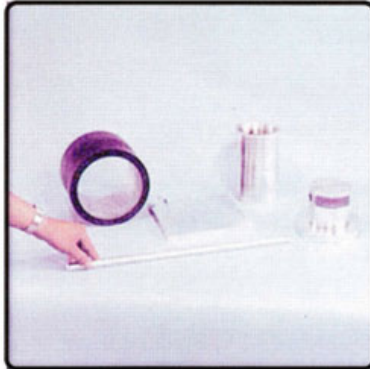
Also required, but not part of this set:

AG-212 A	Sieve 1/2"	;	AG-214 A	Sieve 3/8"
AG-222 A	Sieve No. 8	;	AG-250	Pan & Cover
GE-152	Triple beam balance	;	GE-174	Oven
GE-363	Mixing Bowl	;	GE-922	Soft Brush



AG-750

We can supply :



AG-760 / AG-760 A

Aggregate Crushing Value Apparatus (AG-760)

AG-760

BS-812

For determining the crushing properties of bulk aggregate applying 400 kN load over a period of 10 minutes.

Type	Parts Name	Specification	Qty
AG-761	Cylinder	Machine steel, 154 mm dia.,	1 Pc
AG-762	Plunger	Machine steel	1 Pc
AG-763	Base Plate	Machine steel	1 Pc
AG-764	Metal Measure	115 mm dia., 180 mm deep.	1 Pc
AG-765	Tamping Rod	Galvanized steel, 16 mm dia., 500 mm length, hemispherical at both ends.	1 Pc

Dimension (l x w x h) : 30 x 30 x 55 cm
 Gross Weight : 30 kg

Aggregate Crushing Value Apparatus (AG-760A)

AG-760 A

BS-812

For determining the crushing properties of bulk aggregate applying 400 kN load over a period of 10 minutes.

Type	Parts Name	Specification	Qty
AG-761 A	Cylinder	Machine steel, 78 mm dia.,	1 Pc
AG-762 A	Plunger	Machine steel	1 Pc
AG-763 A	Base Plate	Machine steel	1 Pc
AG-764 A	Metal Measure	57 mm dia., 90 mm deep.	1 Pc
AG-765 A	Tamping Rod	Galvanized steel, 8 mm dia., 300 mm length, hemispherical at both ends.	1 Pc

Dimension (l x w x h) : 20 x 20 x 35 cm
 Gross Weight : 20 kg

Bulk density Test Set (AG-800)

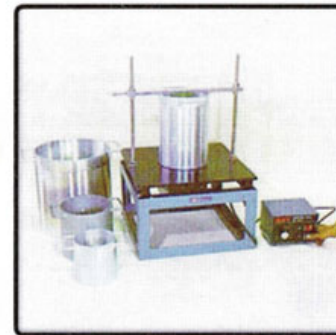
ASTM C-29

AASHTO T-19

For determining bulk density of fine, coarse or mix aggregate

Type	Parts Name	Specification	Qty
CO-410	Vibrating Table	Variable speed up to 3600 rpm, separate control box, 50 x 50 cm table	1 Set
AG-801	Container	Machined steel, galvanized, 3 ltr capacity	1 Pc
AG-802	Container	Machined steel, galvanized, 10 ltr capacity	1 Pc
AG-802	Container	Machined steel, galvanized, 15 ltr capacity	1 Pc
AG-802	Container	Machined steel, galvanized, 30 ltr capacity	1 Pc

Dimension (l x w x h) : 60 x 60 x 100 cm
 Gross Weight : 150 kg



AG-800

Also required, but not part of this set:

GE-159	Platform scale
GE-801	Scoop
GE-891	Straight edge
GE-900	Rubber mallet
GE-930	Tamping Rod

Absorption of Fine Aggregate Test Set (AG-810)

ASTM C-128

AASHTO T-84

For determining the water absorption of fine aggregate at saturated surface dry

Type	Parts Name	Specification	Qty
AG-811	Cone and Tamper		
Consist of :			
AG-811.1	Cone	Brass, 40 mm i.d. at the top, 90 mm i.d. at the bottom, 75 mm height	1 Pc
AG-811.2	Tamper	Machine steel, 25 cm dia	1 Pc
GE-363	Mixing Bowl	Stainless steel, 25 cm dia	1 Pc
GE-396	Glass Plate	10 mm thick, 30 x 30 cm	1 Pc
GE-412	Volumetric Flask	500 ml capacity	1 Pc
GE-825	Scraper	Plastic Handle	1 Pc

Dimension (l x w x h) : 40 x 40 x 30 cm
 Gross Weight : 7 kg

Also required, but not part of this set:

AG-100	Sample splitter	;	AG-232 A Sieve No. 40
AG-250	Pan & Cover	;	GE-152 Triple beam balance
GE-174	Drying Oven	;	GE-521 Wash bottle
GE-530	Pipette	;	GE-747 Rubber gloves
GE-750	Quartering canvas	;	GE-800 Scoop
GE-922	Soft brush	;	



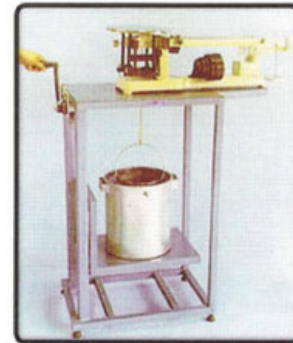
AG-810 A

We can supply :

Specific Gravity & Absorption of Coarse (AG-825)

ASTM C-127	AASHTO T-85		
For determining specific gravity and water absorption of coarse aggregate			
Type	Parts Name	Specification	Qty
AG-826	Dunagan Balance		
Consist of :			
AG-826.1	Mounting Table	Welded steel table, elevated container support	1 Set
AG-826.2	Water Container	Galvanized container, 20 ltr capacity	1 Pc
GE-157	Heavy Duty Solution	20 kg capacity, 1 gr sensitivity supplied complete with weights	1 Set
AG-822	Sample Basket	# 8 mesh, 200 mm dia 200 mm height	1 Pc
Dimension (l x w x h) : 85 x 50 x 130 cm			
Gross Weight : 60 kg			

Also required, but not part of this set:
AG-105 Sample splitter
GE-174 Drying Oven
GE-303 Square pan
GE-750 Quartering canvas
GE-801 Scoop

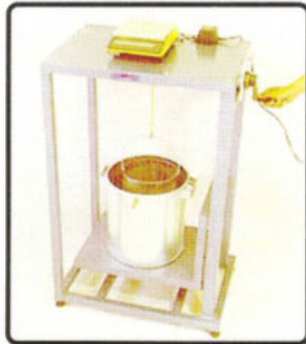


AG-825

Specific Gravity & Absorption of Coarse (AG-830)

ASTM C-127	AASHTO T-85		
For determining specific gravity and water absorption of coarse aggregate			
Type	Parts Name	Specification	Qty
AG-831	Dunagan Balance		
Consist of :			
AG-831.1	Mounting Table	Welded steel table, elevated container support	1 Pc
AG-831.2	Water Container	Galvanized container, 20 ltr capacity	1 Pc
GE-161	Balance	Digital balance, 220 V, 6100 gr x 0.1 gr capacity	1 Pc
AG-822	Sample Basket	# 8 mesh, 200 mm dia 200 mm height	1 Pc
Dimension (l x w x h) : 85 x 50 x 120 cm			
Gross Weight : 50 kg			

Also required, but not part of this set:
AG-105 Sample splitter
GE-174 Drying Oven
GE-303 Square pan
GE-750 Quartering canvas
GE-801 Scoop



AG-830

Organic Impurities Test Tes (AG-910)

ASTM C-40	AASHTO T-21		
For an approximate determination of organic compound in sand			
Type	Parts Name	Specification	Qty
AG-911	Glass Bottle	350 ml cap., Graduated glass with stopper	1 Pc
AG-912	Stock Solution	Sodium Hydroxide solution (NaOH), 1 ltr	1 Btl
AG-913	Standard Colour Chart	5 standard colour	1 Pc
Dimension (l x w x h) : 25 x 25 x 25 cm			
Gross Weight : 8 kg			

Also required, but not part of this set:
AG-100 Sample splitter
GE-750 Quartering canvas



AG-910

Soundness Test Set (AG-920)

ASTM C-88	AASHTO T-104		
For determining aggregate resistance to disintegration by saturated solution of sodium sulfate or magnesium sulfate			
Type	Parts Name	Specification	Qty
AG-921	Stock Solution	Sodium sulphate solution (Na ₂ SO ₄), 1 ltr	1 Btl
GE-363	Mixing Bowl	Stainless steel, 24 cm dia.	1 Pc
GE-424	Beaker Glass	1000 ml capacity	1 Pc
GE-600	Thermometer	Glass, 0 - 100 ^o C	1 Pc
Dimension (l x w x h) : 80 x 50 x 40 cm			
Gross Weight : 8 kg			

Also required, but not part of this set:
AG-214 A Sieve 3/8" ; **AG-234 A** Sieve No. 50
AG-250 Pan & Cover ; **GE-152** Triple beam balance
GE-530 Pipette ; **GE-747** Rubber gloves
GE-174 Drying oven ; **GE-200** Water bath



AG-920

We can supply :